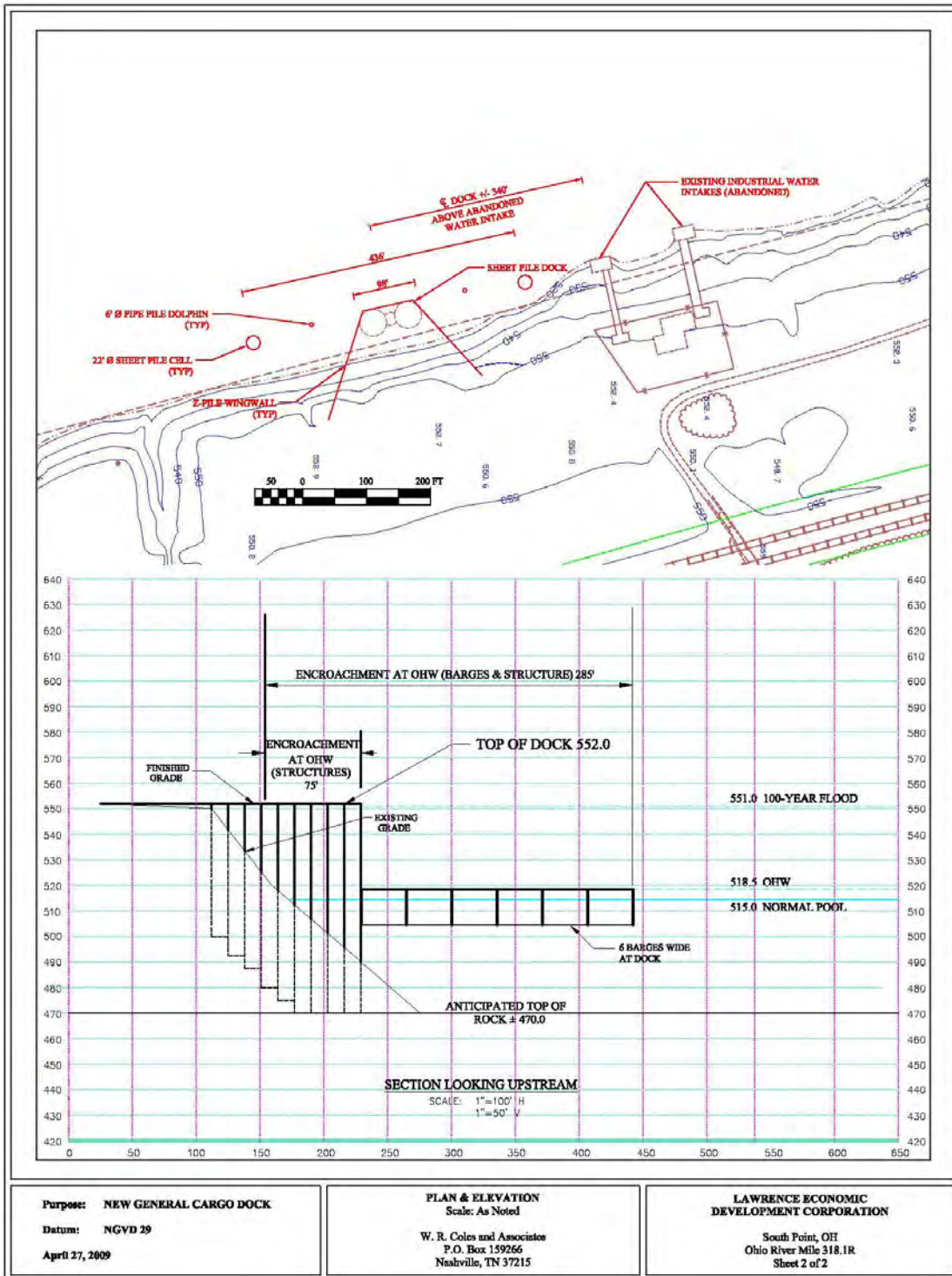




# Sheet Pile Dock Design



**Purpose:** NEW GENERAL CARGO DOCK

**Datum:** NGVD 29

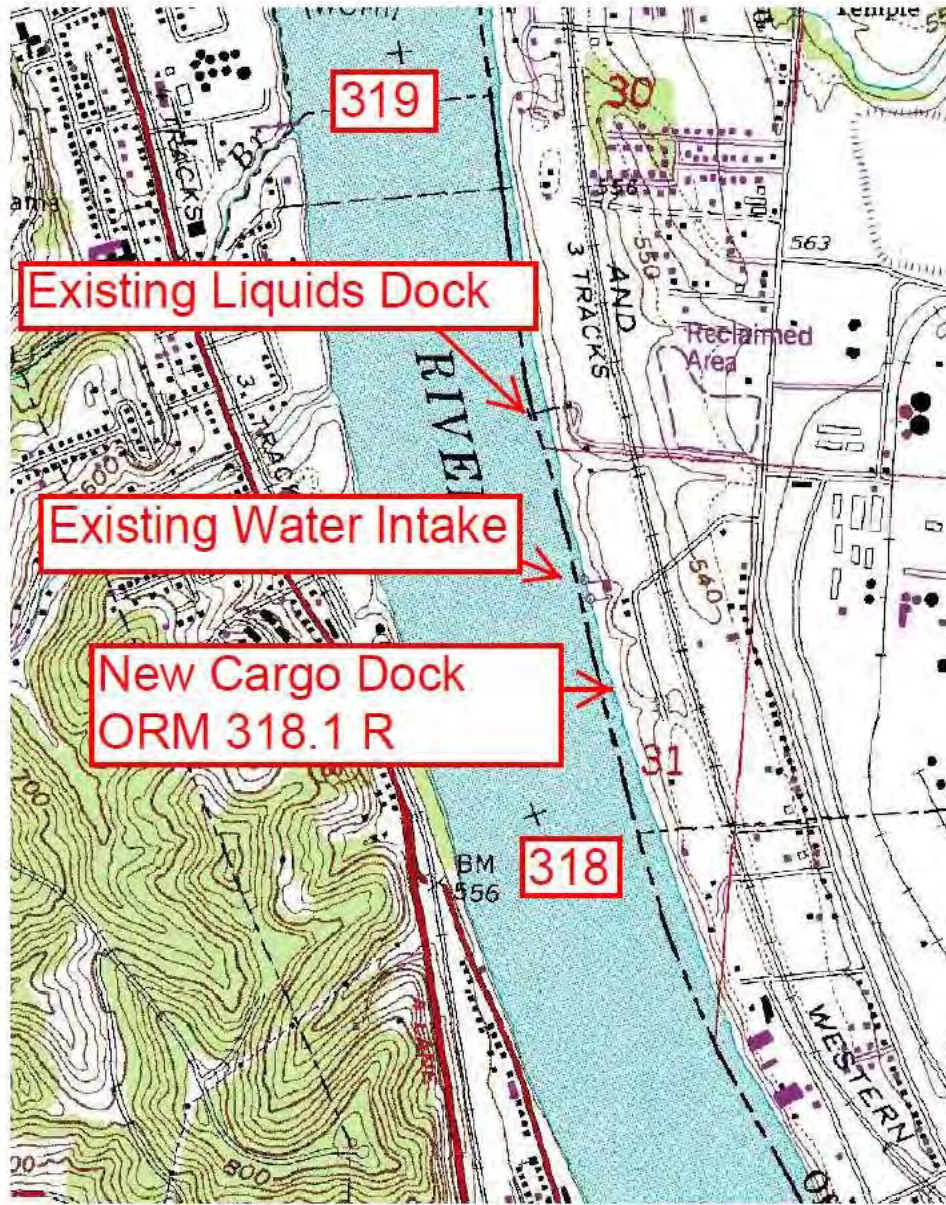
**April 27, 2009**

**PLAN & ELEVATION**  
Scale: As Noted

W. R. Coles and Associates  
P.O. Box 159266  
Nashville, TN 37215

**LAWRENCE ECONOMIC DEVELOPMENT CORPORATION**

South Point, OH  
Ohio River Mile 318.1R  
Sheet 2 of 2



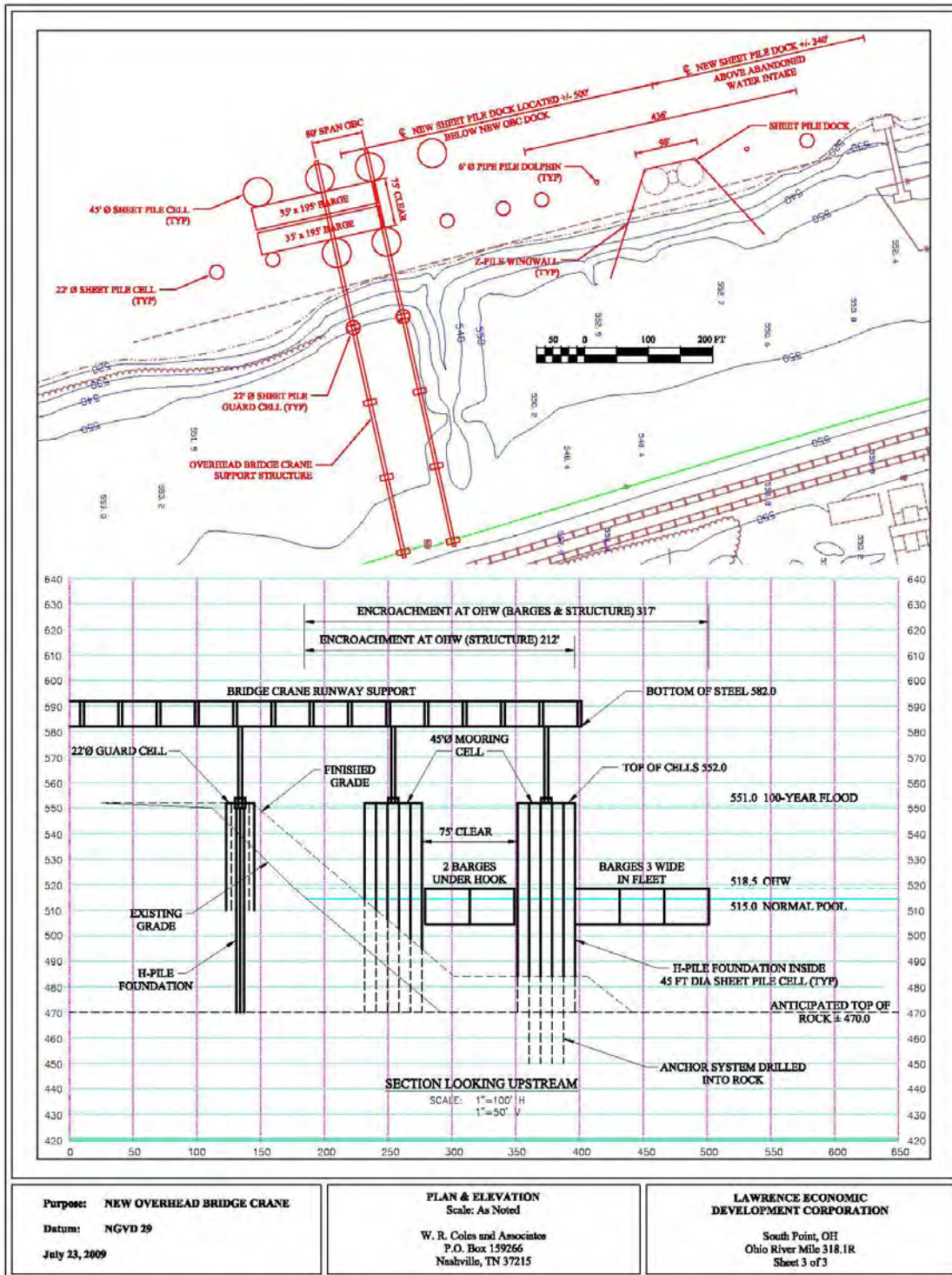
Purpose: NEW GENERAL CARGO DOCK  
 Datum: NGVD 29  
 April 27, 2009

LOCATION  
 Scale: 1" = 1000'  
 W. H. Cates and Associates  
 P.O. Box 159266  
 Nashville, TN 37215

LAWRENCE ECONOMIC  
 DEVELOPMENT CORPORATION  
 South Point, OH  
 Ohio River Mile 218.1R  
 Sheet 1 of 2








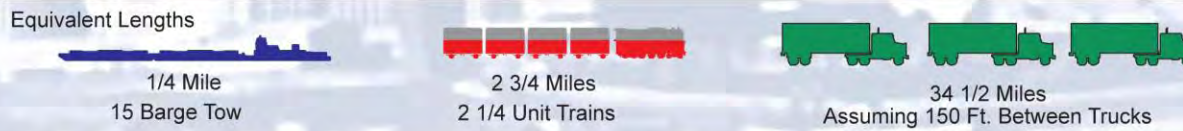
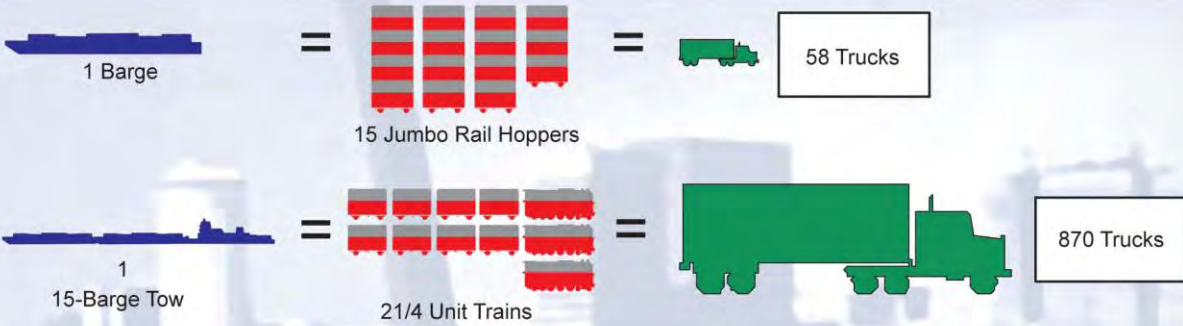
# Mooring Cell Description



**U.S. Army Corps of Engineers: Inland Waterway Navigation Value to the Nation, 2000**

**Alternate Transportation Mode Comparison**

				
Barge	15-Barge Tow	Jumbo Hopper Car	100 Car Unit Train	Large Semi
1500 Ton	22,500 Ton	100 Ton	10,000 Ton	26 Ton
52,500 Bushels	767,500 Bushels	3,500 Bushels	350,000 Bushels	910 Bushels
453,000 Gallons	6,804,000 Gallons	30,240 Gallons	3,024,000 Gallons	7,865 Gallons

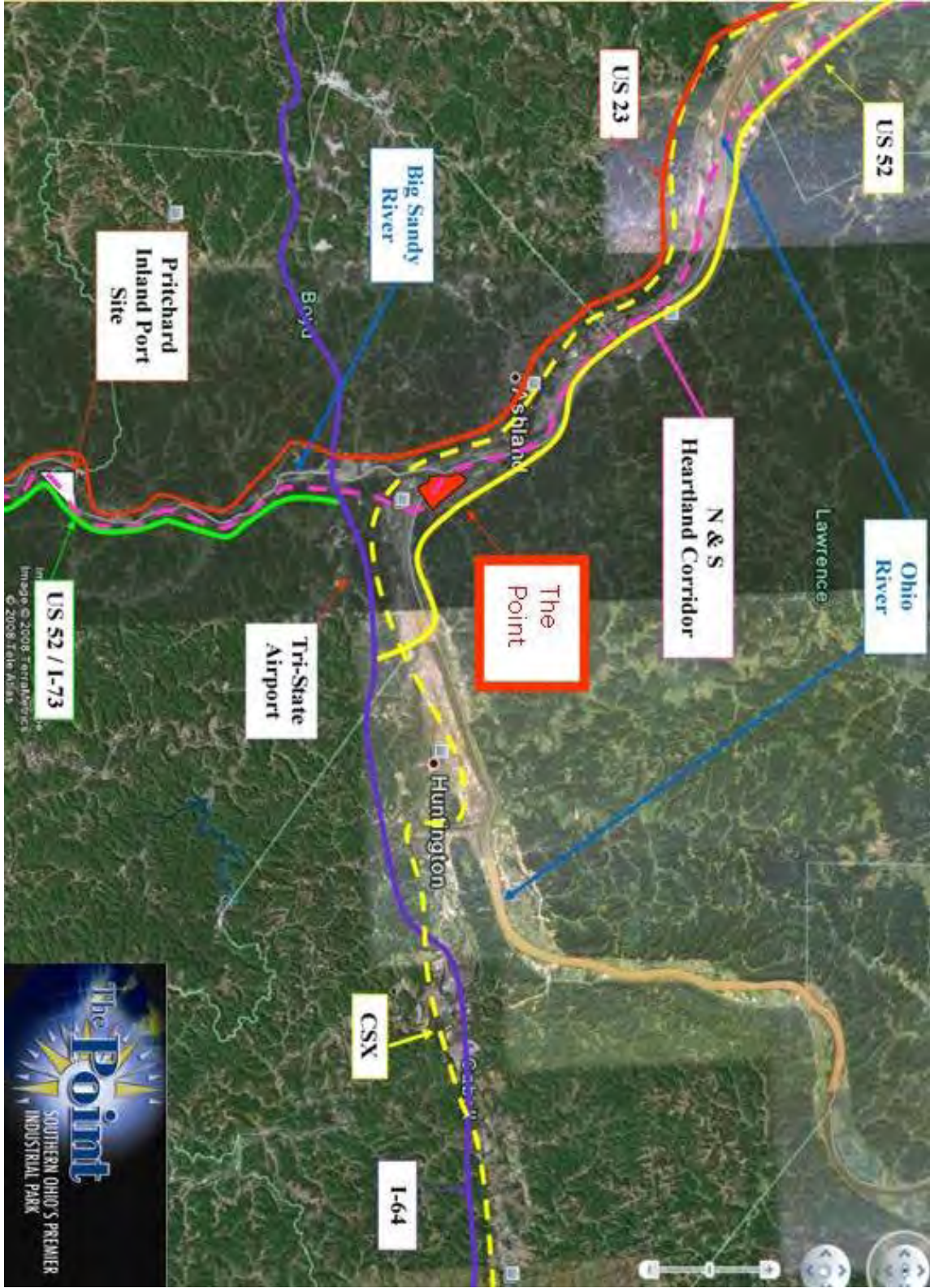


**The Point Industrial Park Aerial**

**Photo**



The Point's Proximity to Major Routes and Transportation Modes



The image features a map of the United States highlighting the U.S. Inland Waterway System in yellow. A red circle and lines call out the Port of Huntington Tri-State area, which is located at the intersection of the Ohio, Kentucky, and Tennessee rivers. The map also labels various other waterways such as the Willamette, Columbia, Snake, Upper Mississippi, Illinois, Kaskaskia, Green R., Cumberland, Tennessee, Alabama, and the Gulf and Atlantic Intracoastal Waterways. A text box in the top left corner provides statistics on the system's length, replacement value, and cargo value.

**U.S. Inland Waterway System**

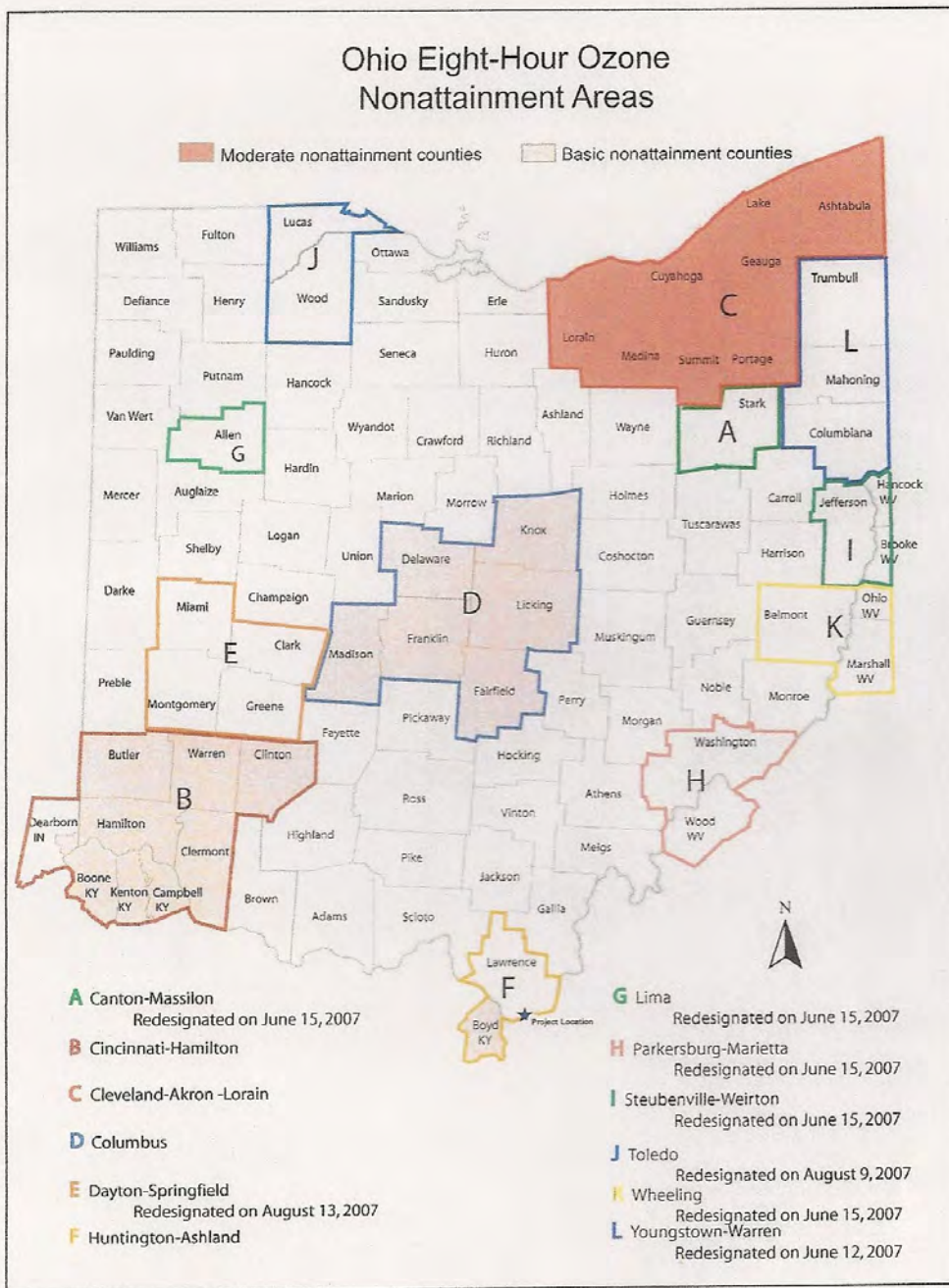
- Nearly 12,000 Miles 9 ft & Over
- Replacement Value \$125+ Billion
- 600+ Million Tons
- \$112+ Billion Cargo Value

**Port of Huntington Tri-State**

**US Army Corps of Engineers**  
Huntington District

**One Corps, One Regiment, One Team**

**8 Hour Non-Attainment Area Map**



Source: Ohio EPA